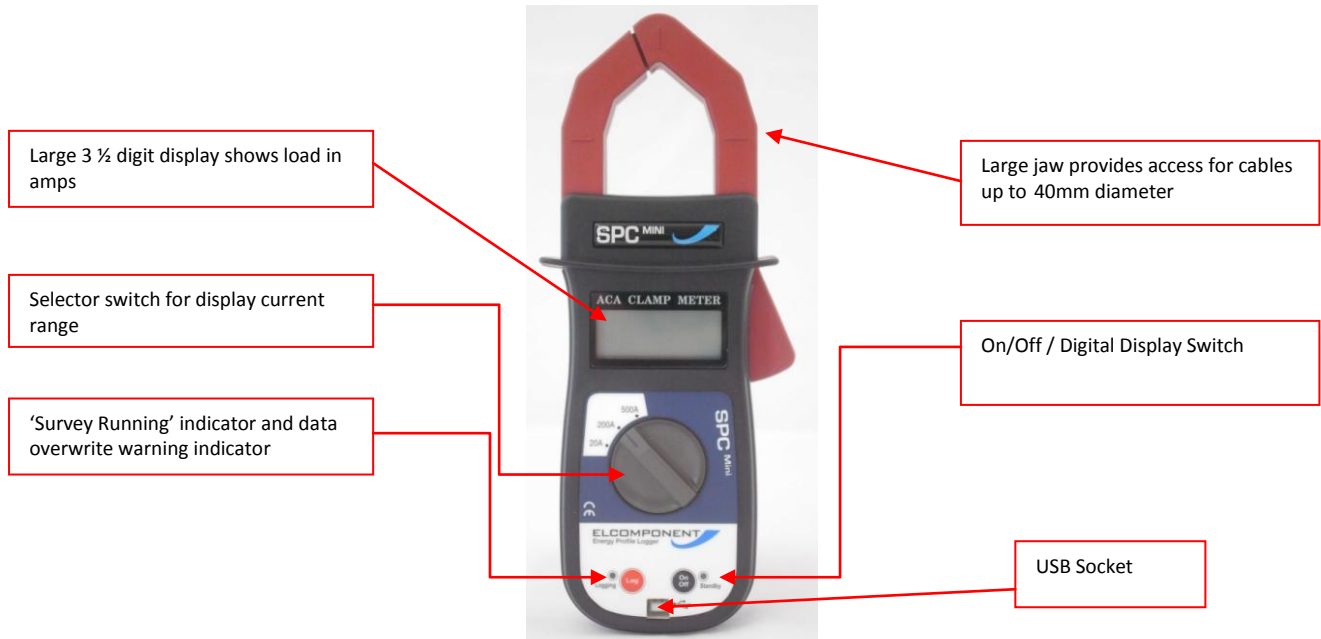


SPCMini USB - 'At A Glance'



SETTING THE UNIT UP

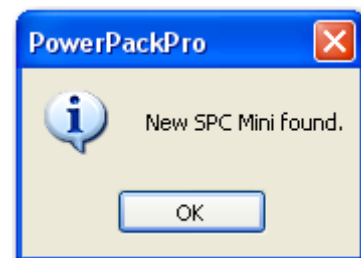
Note: For detailed PC Specification and Full User Manual please see PowerPackPro Disk or www.spcloggers.com download

- i. Install the PowerPackPro software onto your PC.
- ii. Install a PP3 battery into the SPC Mini.
- iii. Switch the SPC Mini on by briefly pressing the 'On/Off' button. Both LEDs will flash twice to indicate that the logger is powered up, and the digital display will be energised. The blue LED will continue to flash to indicate that the unit is in Standby (no logging) mode. The logger is switched off by briefly pressing the 'on/off' button. Both LEDs will flash once and the digital display will be extinguished.

Connect the SPC Mini in standby mode to an unused USB port on your PC. Windows will configure the USB interface from first time use. A "Found New Hardware" dialogue box at the bottom left of the screen will confirm "Your New Hardware is now ready for use". If the hardware interface is not successfully loaded, windows may ask for a disk, or for permission to carry out a web search or the relevant driver. The driver is present on the CD supplied with the product under the "Drivers" Folder.

In rare cases, particularly on Windows 7 machines, the PC may not recognise that the SPC Pro has been connected. See *Additional Notes*.

- iv. With the logger connected to the USB port of your PC, open PowerPackPro. If a 'Bluetooth Scan' window appears, this should be cancelled. Within a few seconds the logger will be found by the PC.

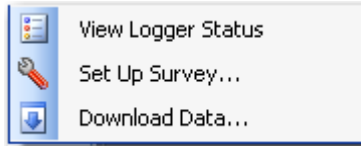


- v. Press OK and the logger will be added to the tree on the upper left hand side of the desktop.

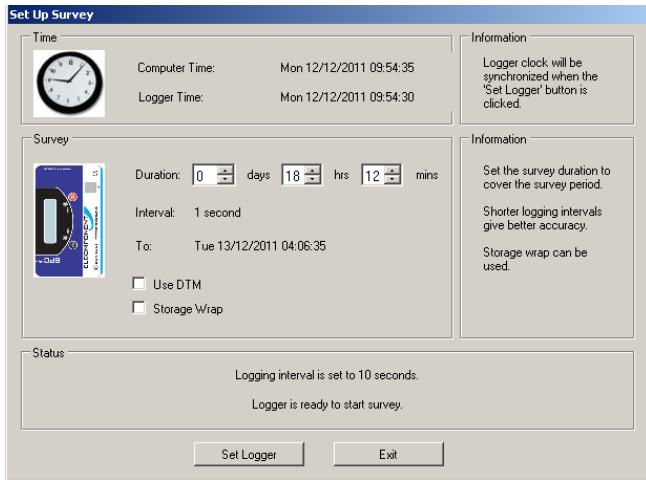


Example of typical tree diagram

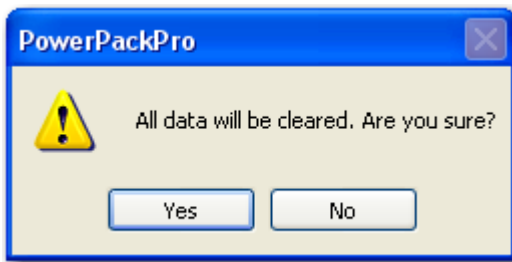
- vi. Right click on the highlighted logger and select "Set Up Survey"



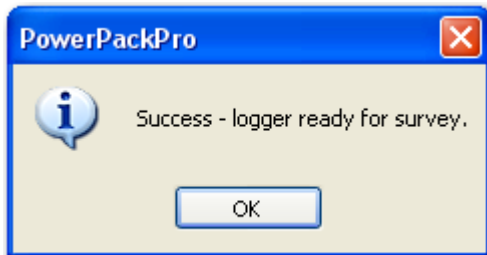
- vii. The set-up window will then appear



- viii. Enter the survey duration and click 'set logger'. The screen will show:



- ix. Select "Yes" and the logger will be set ready for the survey



NOTE: Setting the logger will synchronise the logger clock to the PC clock time and delete any records in the logger memory.

- x. The logger is now set and can be switched off at this point. The PC software can now be closed down. The SPC Mini is utilised in the same way as a standard clip-on ammeter. The load to be measured will show in the digital display while the logger is in "standby" mode. The correct range must be selected for the display function to operate properly.



WARNING: Refer to connection information in the User Manual before using the logger to make electrical measurements.

NOTE: If the logger memory already contains data that have not been downloaded this action will erase the memory. Releasing the button whilst the I.e.d. is still flashing will retain the data, allowing the user to download it before proceeding. If the

button is pressed and held for approximately 5 seconds the I.e.d. will cease flashing, any existing data will be erased and a new survey will commence.

- xi. To start data logging, press and hold the 'Log' button until the red 'logging' LED stops flashing, and then release the button. Logging mode is confirmed by the display extinguishing and the 'logging' LED flashing every few seconds.

Check the LED is showing a short flash every few seconds and the display is 'off', to verify that logging is actually enabled.

- xii. When the desired survey period is complete, press and hold the log button until the display is initiated and the 'log' LED ceases to flash. The logger may be switched off if immediate download is not required.
- xiii. SPC Mini is downloaded as follows:

Open PowerPackPro on the PC and establish communication with the logger as detailed above. Click 'download data' and follow the on screen instructions to download and display your survey.

Full details of the software can be found in the user manual, on the CD.

ADDITIONAL NOTES

If this happens, ensure that the CD is present in your CD drive and the SPC Pro is connected to your PC. Then proceed as follows:

- Open "Control Panel" from the Windows 'Start' button.
- In XP, select 'System' and click the 'Hardware' tab, and then 'Device Manager'. In Vista & W7 select 'Device Manager' directly.
- From the Device Manager list, select 'Other Devices'. Note: There will be a yellow warning triangle showing, which may be identified as 'SPC Pro'. Click on the yellow triangle, and click 'Update Driver'
- Select the option which allows the driver to be installed from a location on the PC (not the automatic search).
- Browse to the CD location [DRIVE]:\V.2.**.*\SPC---Drivers\ and click 'next'.
- Click install, and exit when complete. Note: It may be necessary to load a second driver for the COM port. If the Device Manager list shows a second yellow triangle, click on this and repeat the above procedure

ELCOMPONENT
Making sense of your energy

Unit 5 Southmill Trading Centre, Southmill Road, Bishop's Stortford, Herts. CM23 3DY

01279 503173

www.elcomponent.co.uk

/ 12.12.2011